

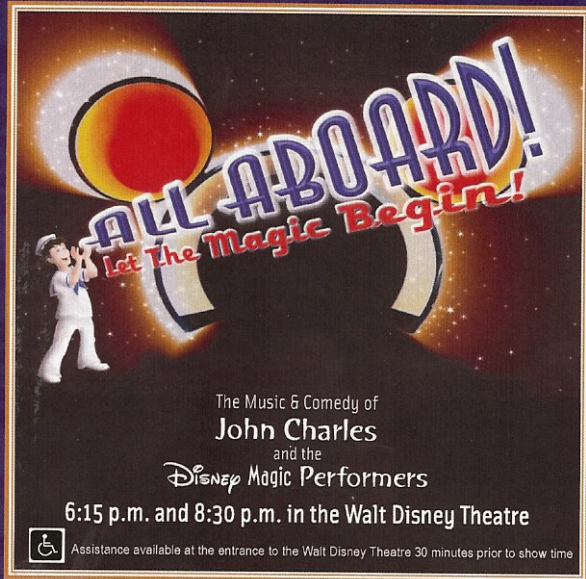
Disney MAGIC

— PERSONAL NAVIGATOR —

PORT CANAVERAL: SATURDAY, OCTOBER 22, 2011

Sunrise: 7:30 a.m. Sunset: 6:53 p.m. Evening Attire: *Cruise Casual*

All Aboard: 3:45 p.m. Port Departure: 5:00 p.m.



UPON ARRIVAL

- **YOUR STATEROOM AND LUGGAGE**
Staterooms will be ready at 1:30 p.m. To allow stateroom hosts to prepare your room, please do not remove the blue stanchion straps. Stateroom hosts will deliver luggage throughout the day until 5:30pm.
- **STATEROOM SAFE**
Each stateroom is equipped with a secured storage safe. Instructions for use are located on the safe.
- **TO CHANGE DINING ASSIGNMENT**
Requests for different seating times will be taken today:
> 12:00 noon - 3:30 p.m., Rockin' Bar D, Deck 3, Forward.
- **PALO DINING RESERVATIONS:**
Are required and will be taken on a first come basis today at:
> 12:00 noon - 3:30 p.m., Rockin' Bar D, Deck 3, Forward.
> 3:30 p.m. - 5:00 p.m., Leave a voice mail at 7-6843.
- **DINNER**
5:45 p.m. - First Seating; 8:15 p.m. - Second Seating
Please check your dining tickets for details of your dining rotation, and bring them to your specific dining location. There is no need to wait in line prior to dinner. Dining Rooms open at designated seating times and your table is reserved each night of your cruise.

▪ **SMOKING IS PROHIBITED IN ALL GUEST STATEROOMS. GUESTS FOUND SMOKING IN THEIR STATEROOMS WILL BE CHARGED A \$250 STATEROOM RECOVERY FEE.**

▪ **ALL SHIP SERVICES WILL BE SUSPENDED BETWEEN 3:30PM AND 4:30PM DUE TO THE MANDATORY BOAT DRILL.**

SHUTTERS **Cruise Memories on CD**
Celebrate your Disney Cruise...one photo at a time.
Order all your cruise photos on a CD for only \$299.95. Plus, save 50% on any photo package. Your photos will be ready for viewing in Shutters Photo Gallery this evening. Visit Shutters to learn more. Conditions apply.

DON'T MISS...

- WALKING SHIP TOUR**
2:00 and 2:30 p.m., meet at Deck 10, Forward Elevators
Enjoy the beauty of the Disney Magic with your Cruise Staff in this guided tour of the ship.
- FAMILY DANCE PARTY WITH HIGH SOCIETY 3**
7:30 p.m., Rockin' Bar D
Music fills Rockin' Bar D as our trio play popular dancing music for our family dance party.
- MICKEY MANIA**
7:30 p.m., Studio Sea
Put your family's Disney knowledge to the ultimate test, or play along from our live studio audience.
- ICE BREAKERS**
10:15 p.m., Rockin' Bar D (Guest 18 and Older)
Come and get to know your fellow guests as your Club Host Tisa gives away prizes and drink specials.



ADVENTURES AWAY

Earn your status as V.I.P. sailors! Join your Cruise Director Peter, your Disney pals, and your Cruise Staff as we officially begin your "Adventures Away."

4:30 p.m.
Goofy's Pool Stage

Disney CRUISE LINE PORT ADVENTURES

Great Port Adventures
Still Available for St. Maarten:

- Rib Boat Adventure
- Under 2 Flags Island Tour
- Golden Eagle Catamaran

DINNER MENU
Animator's Palate: Show Dinner
Parrot Cay: Island Dinner
Lumière's: French Dinner

DRINK OF THE DAY
Bay Breeze (Alcoholic) *
Mango Crush (Non Alcoholic)

WEATHER FORECAST
Saturday: Mostly Sunny
High: 70°F/21°C
Sunday: Partly Cloudy
High: 81°F/27°C

IMPORTANT NUMBERS
Fire / Security 7-3001
Medical EMERGENCY 7-3000
Health Center 7-1923

HOURS OF OPERATION

Flounder's Reef Nursery	5:00 p.m. - 11:00 p.m.
Oceaneer Club	5:00 p.m. - 12:00 a.m.
Oceaneer Lab	5:00 p.m. - 12:00 a.m.
Edge	5:00 p.m. - 12:00 a.m.
Vibe	5:00 p.m. - 1:00 a.m.

PHONE

Dial 7 (or 41 from a WAVE phone) - 5864
Dial 7 (or 41 from a WAVE phone) - 1440
Dial 7 (or 41 from a WAVE phone) - 1445
Dial 7 (or 41 from a WAVE phone) - 5816
Dial 7 (or 41 from a WAVE phone) - 18517



FLOUNDER'S REEF NURSERY

Deck 5 Midship (7-5864)

Infants and Toddlers can enjoy toys and activities at Flounder's Reef Nursery. Reservations are first come, first served so please stop by!



OCEANEER CLUB

Deck 5 Midship (7-1440)



OCEANEER LAB

Deck 5 Midship (7-1445)

REGISTRATION FOR 3-10 YEAR OLDS

Meet the Youth Activities Team in the Oceaneer Lab and Oceaneer Club, complete your registration and learn all about the Themed Experiences this cruise!



CLUBHOUSE SERIES - The Clubhouse Themed Experiences focus on movement and feature content which appeals to younger children. *Recommended 7 years and younger.*



STORYBOOK SERIES - The Storybook Series Themed Experiences are designed with a strong connection to the Disney classic stories.



JUMP UP! SERIES - The Jump Up! Themed Experiences will include large ground games and movement-oriented activities.



CREATE & INVENT SERIES - The Create & Invent Themed Experiences will have a tactile focus allowing children to create and admire their work.



IN THE SPOTLIGHT SERIES - The In The Spotlight Themed Experiences focus on children's stage presence with lots of activities and enthusiasm. *Recommended 7 years and older.*



SOLVE IT! SERIES - The Solve It! Themed Experiences are less active, but will challenge children with problem/solutions-based activities. *Recommended 7 years and older.*



OUT AND ABOUT SERIES - Set outside the designated Youth Activity spaces, The Kids Out and About Themed Experiences provides the opportunity for families to play together. *Recommended 8 years and older.*

DINE & PLAY

A convenience for families dining at 8:15 p.m., our Youth Activities Counselors will be available at 9:15 p.m. at the entrance of Lumière's, Parrot Cay and Animator's Palate dining rooms to bring registered children to join the fun in the Oceaneer Club and Oceaneer Lab.

EDGE - FOR 11-13 YEAR OLDS

Deck 2 Midship (7-5816)

Edge is an interactive play space designed to look like the ship's bridge where kids 11 to 13 years of age can steer a virtual ship, play video games, watch television, and participate in arts and crafts with kids their own age.

WHAT'S NEW IN EDGE

10:00 p.m., Edge

Come and meet your counselors and fellow tweens as we get to know each other and see what there is for you to do all week long in Edge.

VIBE - FOR 14-17 YEAR OLDS

Deck 10 Midship (7-18517)

THE DOWNLOAD

10:30 p.m., Vibe

Come up to Vibe and help plan all the fun activities you will be doing this cruise with your new friends! We'll use our very own Teens-only intranet database to decide how our week will go!

FUN FOR THE WHOLE FAMILY

TALENT SHOW SIGN UP

Let your family take center stage and strut their stuff. Everybody has a talent — it's time to show off yours! Pre-register at the Port Adventures Desk.

TEA WITH ALICE

Be sure to stop by Guest Services to reserve your special pass for one of two opportunities to have tea with Alice. (Limited number available).

WALKING SHIP TOUR

2:00 and 2:30 p.m., Deck 10, Forward Elevators

Enjoy the beauty of the Disney Magic® with your Cruise Staff in this guided tour.

POOLSIDE JAMS WITH DJ MATT AND CLUB HOST TISA

2:30 p.m., Goofy's Pool Stage

Start your afternoon off in style with DJ Matt and your Club Host Tisa.

ADVENTURES AWAY

4:30 p.m., Deck 9, Goofy's Pool Stage

Earn your status as VIP sailors at this high-energy celebration. Join your Cruise Director, Peter, your Cruise Staff and the Disney Characters as we kick-off the official start to your Adventures Away!

LIVE MUSIC WITH THE JG DUO

5:00, 7:30, 9:30 and 10:30 p.m., Promenade Lounge

Our duo, play live music for your listening and dancing pleasure, with a special Smooth Sounds set at 9:30 p.m.

MICKEY MANIA

7:30 p.m., Studio Sea

Put your family's Disney knowledge to the ultimate test, or play along from our live studio audience.

DISNEY CHANNEL ALL-STARS DANCE PARTY

9:45 p.m., Studio Sea

Hear the hits from some of your favorite Disney Channel stars, including The Jonas Brothers and Hannah Montana.

DISNEY KARAOKE

10:15 p.m., Studio Sea

Bring the entire family, grab the mic and sing along to your favorite Disney hits.



CHARACTER APPEARANCES

Check here each day for Character appearances. For detailed Character appearance information, please dial 7-PALS or see the Character Information Board in the Lobby Atrium. Meet-and-Greets will be advertised for the length of time the line will be open. To avoid disappointment, please meet at start time of appearances.

ADVENTURES AWAY: Join some of your favorite Disney Characters today as they celebrate the start of our journey at Adventures Away at 4:30 p.m., Goofy's Pool Stage, Deck 9, Midship.

ADULT EXCLUSIVE ENTERTAINMENT

PIANO AND VOCAL FAVORITES

7:30, 9:30, 10:30 and 11:30 p.m., Sessions

Pianist Tim Moss plays your favorite piano and vocal tunes.

HIGH SOCIETY 3

9:30 and 11:15 p.m., Rockin' Bar D

Join our house trio for some great sounds.

COLLEGE CLUB SOCIAL

10:00 p.m., Diversions

Meet other 18 - 21 year olds and plan the rest of your night and cruise.

ICE BREAKERS

10:15 p.m., Rockin' Bar D

Come and get to know your fellow guests as your Club Host Tisa gives away prizes and drink specials.

MAGIC QUEST

10:45 p.m., Rockin' Bar D

Your Club Host, Tisa, takes you on the wildest scavenger hunt on the high seas.

DJ MATT

11:45 p.m., Rockin' Bar D

Our very own DJ Matt spins your favorite tunes until the early hours!

MORE TO ENJOY WHILE ONBOARD

VISTA GALLERY

Take a walk through the Vista Gallery Deck 4, Midship to find a collection of unique Disney art. Pieces are available for purchase.



GREAT VALUE PHOTO PACKAGES

We have photo packages to suit everyone. Come by Shutters, Deck 4 Aft, tonight to learn more and enter our one time only raffle. You could win your choice of two 8X10 photos. See you there!



PLAN YOUR NEXT CRUISE

Save 10% off most categories and receive an Onboard Credit for your next cruise by booking while onboard. Stop by the Future Cruise Sales Desk, or call extension 7-2848 to learn more.

SURF @ SEA

\$.75 per minute or save money by buying blocks of time. \$55 for 100 minutes, \$100 for 250 minutes and \$150 for 500 minutes. Wireless information sheets are available at Guest Services, Deck 3, Midship.

PORT AND SHOPPING INFORMATION

Stop by the Shopping Desk, Deck 3 Midship, 7:30-8:30pm and receive your FREE gift to commemorate your cruise vacation! Join Aimee for the Shopping Show on Sunday at 1:00 p.m. in the Buena Vista Theatre and receive your FREE charm bracelet and enter to win beautiful jewelry!



FIND YOUR VACATION PARADISE

Visit the Disney Vacation Club desk on Deck 4, Midship, to find out more about Disney's best kept secret. See your daily Personal Navigator for details about our Group Presentations.



JET LAG SPECIAL

Let your cruise start without sore muscles and swollen ankles. Indulge yourself with a 25 minute back massage, 15 minute foot and ankle massage and 10 min relaxing scalp massage. For only \$99

Disney CRUISE LINE

PORT ADVENTURES

Pre-arranged tours are designed to ensure that you see the best that our ports have to offer. Explore the two nations of St. Maarten on a land tour or take an exhilarating RIB boat ride from the Dutch to the French side. From St. Thomas you can enjoy the scenic splendor of St. John or snorkel in the beautiful waters of the U.S.V.I. Our experienced Port Adventures team will help you find the best choices for your family at the Port Adventures Desk, Deck 3, Midship.

SHOPPING



Everyday there's something new at Mickey's Mates. Be sure to visit our shops often for daily onboard promotions.



Disposable cameras, sundries and sunscreen are available in Treasure Ketch.

Fossil Sunglasses

When you're cool the sun is always shining- so you'll need a good pair of sunglasses! Treasure Ketch is the place to find the latest styles of Fossil Sunglasses.

Diamonds are Forever

View our collection of Diamond Jewelry, including a pieces designed exclusively for Disney Cruise Line.

Godiva Chocolates

Visit Treasure Ketch to find a selection of Godiva Chocolates. Receive a free Godiva tote bag when you purchase any boxed chocolate. While supplies last.

Dooney & Bourke

Become the owner of a Disney Cruise Line Exclusive Dooney & Bourke bag. Treasure Ketch, Deck 4 Forward.

OPERATING HOURS

Disney Vacation Club Desk	5:00p.m. - 8:00 p.m.	Port Shopping Info	7:30 p.m. - 8:30 p.m.
Goofy's Pool	12:30 p.m. - 12:00 mid	Preludes (snacks)	5:45 p.m. - 6:30 p.m.
Guest Services Desk	24 Hours	Quarter Masters Arcade	24hrs
Health Center	4:30 p.m. - 7:00 p.m.	Quiet Cove Pool	12:30 p.m. - 12:00 mid
Mickey's Mates	6:00 p.m. - 11:00 p.m.	Shutters Photo Gallery	5:30 p.m. - 11:00 p.m.
Mickey's Pool	12:30 p.m. - 10:00 p.m.	Treasure Ketch	6:00 p.m. - 11:00 p.m.
Mickey's Slide	1:00 p.m. - 3:30 p.m.	Up Beat Duty Free	6:00 p.m. - 11:00 p.m.
	4:30 p.m. - 5:30 p.m.	Vista Spa Fitness Center	11:30 a.m. - 11:00 p.m.
Mickey's Splash Zone	12:30 p.m. - 8:00 p.m.	Vista Spa and Salon	11:30 a.m. - 11:00 p.m.
Port Adventures Desk	1:00 p.m. - 3:30 p.m.		
	4:30 p.m. - 6:00 p.m.		
	7:30 p.m. - 8:30 p.m.		

Dining Hours

Consumers who order raw or partially cooked, ready-to-eat food of animal origin, are hereby informed that the food is not sufficiently cooked to ensure its safety.

LUNCH

Goofy's Galley	12:00 noon - 3:30 p.m.
Parrot Cay	Upon boarding - 2:15 p.m.
Pinocchio's Pizzeria	12:00 noon - 6:00 p.m.
Pluto's Dog House	12:00 noon - 3:30 p.m.
Topsider Buffet	12:00 noon - 3:15 p.m.

DINNER

Animator's Palate*	5:45 p.m. & 8:15 p.m.
Lumière's*	5:45 p.m. & 8:15 p.m.
Parrot Cay*	5:45 p.m. & 8:15 p.m.
Pluto's Dog House	4:30 p.m. - 10:00 p.m.

* Pre-arranged seating assignments

Bar Hours

Bars are solely for adults 18 and older, except during scheduled family events. Adults must be 21 and olderto consume alcoholic beverages.

ON DECK

Cove Cafe	12:00 noon - 12:00 mid
Pinocchio's Pizzeria	12:00 noon - 12:00 mid

Pluto's Dog House	12:00 noon - 6:00 p.m.
Signals	12:00 noon - 9:30 p.m.

LOUNGES

Preludes	Open during show times
Promenade Lounge	12:00 noon - 12:00 mid
Studio Sea	Open during events only

BEAT STREET (18 yrs. and older after 9:00 p.m.)

Diversions	12:00 noon - 12:00 mid
Diversions 2 for 1 specials	5:00-5:45 p.m., 7:30-8:15 p.m.
Rockin' Bar D	7:00 p.m. - 1:00 a.m.
Sessions (guests 18 and older)	6:00 p.m. - 12:00 mid

LATE NIGHT SNACKS

Beat Street	11:00 p.m. - 12:00 mid
Diversions	11:00 p.m. - 12:00 mid
Ice Cream at Goofy's Galley	6:00 p.m. - 11:00 p.m.
Pinocchio's Pizzeria	9:30 p.m. - 12:00 mid
Promenade Lounge	11:00 p.m. - 11:45 p.m.

ADDED FEATURES

Beverage Station	24 hours
Room Service	24 hours

Shops close in port due to Customs regulations.

IMPORTANT INFORMATION

Security Notice

All Guests (including Children) who wish to disembark or embark the ship are required to present their Key to the World card at the gangway. A photo ID is also required for those Guests who are 18 years of age or older. Guests under the age of 18 are required to have a Parent, Guardian or other responsible adult sign an authorization form at the time it is given out if they wish to go ashore unaccompanied. Authorization forms are available at the gangways and Guest Services.

Cold and Flu Reminder

Please wash hands frequently and thoroughly, particularly before meals. Contact the Health Center by dialing 7-1923, should anyone in your party become ill.

Corridor Quiet Hours

As a courtesy to all our Guests, please recognize quiet hallway hours from 10:00 p.m. til 8:00 a.m.

Inclement Weather

For the safety of all Guests, outdoor events may be changed due to unforeseen weather conditions.

Environmental Message

With Disney's commitment to the Environment please refrain from throwing anything over the Ship's side. Thank you.

No Reserved Seats Policy

As a courtesy to all Guests we kindly advise that the saving of seats is not permitted in the Walt Disney Theatre, and the saving of the sun loungers is not permitted on Deck 9 and 10. Items left unattended will be returned to lost and found at Guest Services Deck 3 Midship.

Smoking Policy

For the comfort of our Guests the following open deck areas on the Starboard Side are designated as Smoking areas:
Deck 4 Starboard side from 6:00pm to 6:00am ONLY, Deck 9 Forward Starboard side at Quiet Cove and Deck 10 Starboard side. Smoking is prohibited in all Guest staterooms. Guests found smoking in their staterooms will be charged a \$250 stateroom recovery fee.

Walt Disney Theatre

Theatrical performances may use artificial fog, strobe lights, pyrotechnics and other special effects. For the safety of our performers and the comfort of those around you, the use of flash photography and video recording is prohibited.

Verandah Safety

Please do not leave any combustible materials on your balcony when not present in your stateroom for safety reasons.